



The IGU Commission on *Geography for Future Earth*:

Coupled Human-Earth Systems for Sustainability

Annual Report for 2023-2024

The report includes membership, meetings, publications, and other important information for the IGU Commission on *Geography for Future Earth: Coupled Human-Earth Systems for Sustainability* (IGU-GFE).

1. Steering Committee

The IGU Commission on *Geography of Future Earth: Coupled Human Earth Systems for Sustainability* (IGU-GFE) has been formally established in October 2017 and its second term started in 2020. IGU-GFE focuses on human-land systems and their interfaces with the coast, the ocean, and the atmosphere. It aims to promote a wider analysis and innovative thinking about global land sustainability through the bridging and synthesis of physical geography, human geography, ecology, hydrology, atmospheric, climate, and social sciences. It provides a platform for communication among geographers globally to promote research and innovation about sustainability. The steering committee structure of IGU-GFE is as follows:

Initiator and Honorary Chair

Prof. Dr. Bojie Fu

Distinguished Professor of Research Center for Eco-Environmental Sciences, Chinese Academy of Sciences

Address: 18 Shuangqing Road, Haidian District, Beijing, 100085, P. R. China

Email: bfu@rcees.ac.cn; Phone: +86 10 62923557

Chair

Prof. Dr. Wenwu Zhao

Director of Office of Institutional Management and Development Planning, Beijing Normal University

Professor of Institute of Land Surface System and Sustainable Development, Faculty of Geographical Science, Beijing Normal University

Address: No. 19, XinJieKouWai St., Haidian District, Beijing 100875, P. R. China

Email: zhaoww@bnu.edu.cn; Phone: +86 10 58802125

Vice-Chair

Prof. Dr. Mark Stafford Smith

Chief Coordinating Scientist in Institute of Land and Water, CSIRO, Australia; Chair of Science Committee, Future Earth

Address: GPO BOX 1700 Canberra Act 2601, Australia

Email: Mark.Staffordsmith@csiro.au; Phone: +61 408 852 082

Steering Members

Prof. Dr. Hanqin Tian

Institute Professor of Global Sustainability, Schiller Institute for Integrated Science and Society, Professor, Earth and Environmental Sciences Dept. Boston College

Address: Chestnut Hill, MA 02467, USA

E-mail: hanqin.tian@bc.edu; Phone: (617) 552-3664

Prof. Dr. Peter Verburg

Institute for Environmental Studies, Faculty of Science, VU University Amsterdam, Netherlands

Address: De Boelelaan 1111, 1081 HV Amsterdam, Netherlands

E-mail: p.h.verburg@vu.nl

Prof. Dr. Soroosh Sorooshian

Distinguished Professor of Civil and Environmental Engineering, Distinguished Professor (Joint Appointment) of Earth System Science, Director of Center for Hydrometeorology and Remote Sensing, University of California, Irvine

Address: Irvine E/4130 Engineering Gateway, Irvine, CA USA

Email: soroosh@uci.edu; Phone: (949) 824-8825

Prof. Dr. Sandra S. Luque

Director of Research at IRSTEA, National Research Institute of Science and Technology for Environment and Agriculture

Address: 500 rue JF BRETON, Montpellier 34000, France

Email: sandra.luque@irstea.fr; Phone: +44 1334 463381

Prof. Dr. Toshiya Okuro

Laboratory of Landscape Ecology and Planning Department of Ecosystem Studies, The University of Tokyo

Address: Yayoi 1-1-1, Bunkyo-Ku, Tokyo 113-8657, Japan

E-mail: aokuro@mail.ecc.u-tokyo.ac.jp; Tel: 3-5841-5051 Fax: 3-5841-5072

Prof. Dr. Francesco Cherubini

Industrial Ecology Programme, Department of Energy and Process Engineering, Norwegian University of Science and Technology

Address: IT-bygget, 238, Gløshaugen, Sem Sælands vei 7, Norway

E-mail: francesco.cherubini@ntnu.no; Tel: + 47 73598942

Prof. Dr. Dra. Nicole Bernex

Professor Principal at Department of Humanities - Geography Section, Pontifical Catholic University of Peru

Address: Universitaria Avenue 1801, San Miguel, Lima 15088, Peru

Email: nbernex@pucp.edu.pe

Prof. Dr. Walter Musakwa

Geography & Environmental Management & Energy Studies Faculty of Science, University of Johannesburg, South Africa

Address: 6 Henley Road, Auckland Park Brixton 2092, South Africa

Email: wmusakwa@uj.ac.za; Phone: +27 011 559 6318

Prof. Dr. Paulo Alexandre da Silva Pereira

Professor and Head of Environmental Management Laboratory, Mykolas Romeris University, Lithuania

Address: Ateities st. 20, LT-08303 Vilnius, Lithuania

Email: paulo@mruni.eu

No.	Countries	Members
1	USA	2
2	Netherlands	1
3	France	1
4	Japan	1
5	Norway	1
6	Peru	1
7	South Africa	1
8	Lithuania	1
9 members from 8 countries		

Secretary

Prof. Dr. Yan Li

Professor at the Institute of Land Surface System and Sustainable Development, Faculty of Geographical Science, Beijing Normal University

Address: No. 19, XinJieKouWai St., Haidian District, Beijing 100875, P. R. China

Email: yanli@bnu.edu.cn; Phone: +86 10 58800596

2. Meetings**2.1 Meetings held in 2024*****The Summer School on Geography and Sustainability 2024***

The Summer School on Geography and Sustainability was held at Beijing Normal University from June 3rd to 7th, 2024. Besides the on-site course, it was also open to international audiences via Zoom. This 4-day summer school aimed to help students to learn about the importance of geography for sustainable development, the innovation of geography, and provide the support for regional, national and global sustainable development.

The summer school was hosted by Beijing Normal University, and co-organized by Geography and Sustainability and IGU-GFE Commission. Nearly 300 participants from 18 countries attended the summer school, including both students and early careers researchers.

Prof. Bojie Fu (Vice-President of IGU), Prof. Michael Meadows (President of IGU), Prof. Barbaros Gönençgil (Secretary-general of IGU), Prof. Yukio Himiyama (Past-president of IGU), and other scientists including Prof. Peijun Shi, Prof. Yonglong Lu, Prof. Kwan Mei-Po, Prof. Yansui Liu, Prof. Xiubin Li, Prof. Min Chen, Prof. Xiangzheng Deng, Prof. Fahu Chen, Prof. Junran Li, Prof. Paulo Pereira, Prof. Weiqi Zhou, Prof. Yangjian Zhang, Prof. Yan Li, Prof. Wenwu Zhao gave lectures on different topics covering geography and sustainability.

During the summer school, Geography and Sustainability recognized outstanding scholars who made great contributions to the journal *Geography and Sustainability*. Special Contribution Award was awarded to Prof. Michael Meadows for his outstanding contributions to advancing geography and sustainability, expanding international cooperation, and fostering friendship among the world. Best editors, best reviewers, and Top cited articles of *Geography and Sustainability* were also awarded.

The summer school will be organized continually, and provide an international platform for communication on promoting sustainable development from an integrated geography perspective.

 **SUMMER SCHOOL ON GEOGRAPHY AND SUSTAINABILITY 2024**
June 3-7, 2024



Photo of the onsite summer school

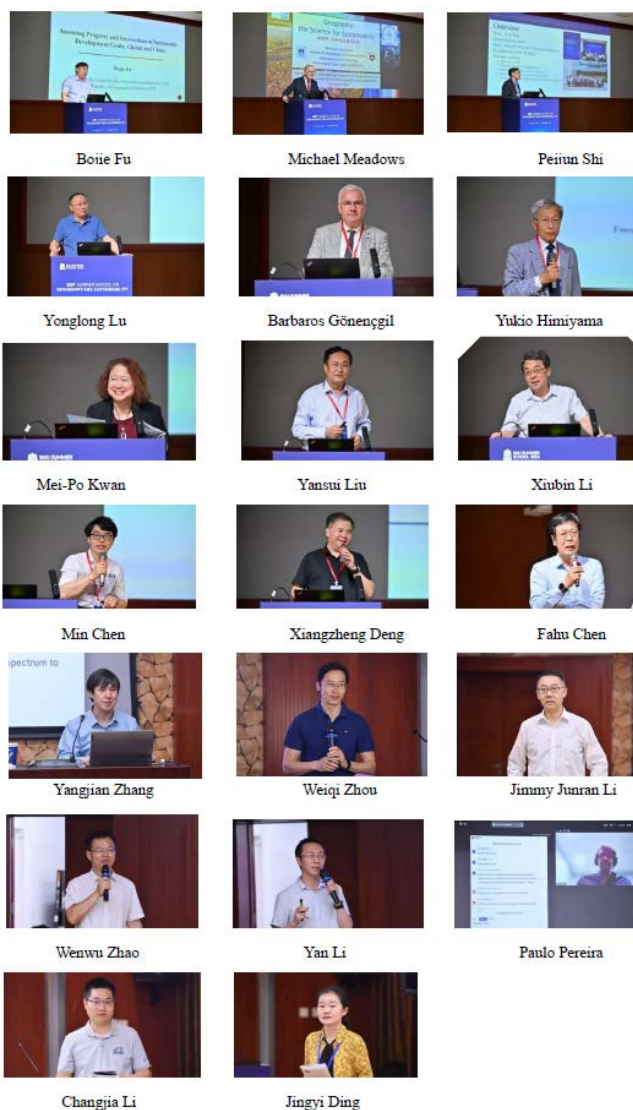


Photo of keynote speakers

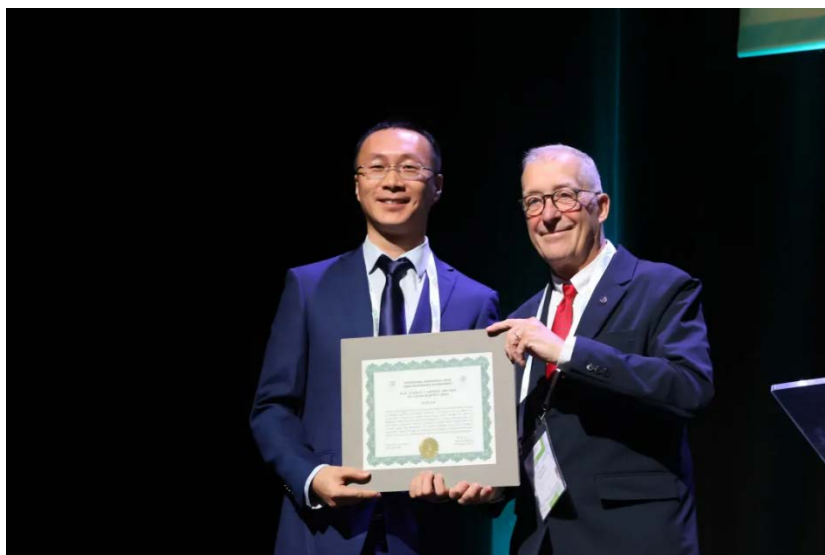
The 35th International Geographical Congress 2024

The 35th International Geographical Congress was held in Dublin, Ireland on August 24th-30th. Prof. Bojie Fu, Prof. Wenwu Zhao, and Prof. Yan Li attended that conference. Prof. Wenwu Zhao organized a panel session named *Promote ecosystem services for sustainable development goals* attracting 26 attendants from China, Canada, Bulgaria, Lithuania, and Turkey.

Prof. Yan Li was awarded the IGU Early Career Award in Geography in the closing ceremony.



The panel session named *Promote ecosystem services for sustainable development goals*



Prof. Yan Li and Prof. Michael Meadows

2.2 Upcoming Meetings in 2025

Summer School on Geography and Sustainability. IGU-GFE Commission will organize a summer school for students all over the world, especially in Africa. It will be held in Beijing Normal University in July 2025. As we know, Africa is the second largest and second most-populous continent in the world, hosts a large diversity of ethnicity, cultures and languages, and it owns the youngest population among all the continents. Africa's sustainable development is so important for achieving global SDGs. The summer school aims to help more African students learn more about geography and sustainability, and provide the support for regional, national and global sustainable development.

International Workshop on Geography and Sustainability. It will be held in Xi'an, Shaanxi, China on 17-20 November 2025. The theme is "Geography and Sustainable Development from a Transdisciplinary Perspective". It will be hosted by Beijing Normal University and Shaanxi Normal University, co-organized by IGU-GFE Commission and the journal *Geography and Sustainability*.

3. Publications

3.1 *Geography and Sustainability*—the official journal of IGU-GFE

Geography and Sustainability, an international journal sponsored by Beijing Normal University and IGU-GFE Commission, is jointly published by Beijing Normal University Publishing Group and Elsevier. Prof. Bojie Fu, vice president of IGU, serves as the chief editor of the journal.

Since its launch in 2020, the journal has been developed for five years. As the world's first international open-access journal focusing on geography and sustainability research, it aims to promote regional and global sustainable development through an integrated geographical perspective, serving as a focal platform for academic exchange and dissemination for global geographers committed to sustainability.

Over the past five years, the journal's influence has continued to grow, being indexed by various domestic and international databases such as DOAJ, Scopus, Web of Science (ESCI), GEOBASE, NSD, CSCD, OARL, China Science Core Journals Database, COAJ, the Directory of High-Quality Journals in China's Geographic and Resource Fields, CNKI, Wanfang Data, Superstar Journals, and CQVIP.

The journal's Web of Science Impact Factor 2023 is 8.0, ranking in the Q1 zone of its subject categories and 2/65 in the field of Geography, Physical. The latest Scopus CiteScore is 16.7, ranking in the Q1 zone of its subject categories and 2/179 in the field of Earth and Planetary Sciences: Earth-

Surface Processes. It is also in the first Tier of Environmental Sciences and Ecology category in the Chinese Academy of Sciences journals.

In the year 2024, the journal has garnered more attention from researchers in the field, with a rapid increase in submissions. Sixty papers from China, USA, England, Germany, Australia, Netherlands, Portugal, Sweden, Brazil, France, Indonesia, Japan, Lithuania, and so on have been published in 2024 with an average publishing time of 3 months. Those articles have been cited 169 times. The average per item is 2.82. (Last updated: 3 January, 2025) To better serve our authors and readers, the journal will transition from a quarterly to a bimonthly publication starting in 2025, in the hope of further promoting the dissemination and promotion of scientific research outputs.

For inquiry and paper submission issues, please contact the editorial office: geosus@bnu.edu.cn. (<https://www.journals.elsevier.com/geography-and-sustainability/>)

3.2 A special issue on *Trade-offs and Synergies of Sustainable Development Goals (SDGs): Insights from Big Earth Data in Geography and Sustainability*

Jinwei Dong, Min Chen, Zhenci Xu, Graciela Metternicht, and Yu Chen are organizing a special issue *Trade-offs and Synergies of Sustainable Development Goals (SDGs): Insights from Big Earth Data in Geography and Sustainability*.

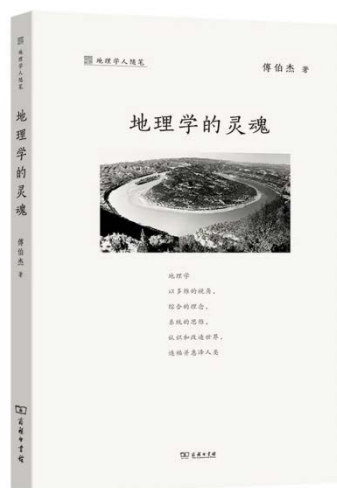
The global pursuit of Sustainable Development Goals (SDGs) faces unprecedented challenges, particularly in the intricate interplay among different SDGs, for example, the interactions of food security, water resources, and ecological security which are closely related to human well-being. It becomes imperative to examine the trade-offs and synergies inherent in achieving these critical SDGs. This special issue will delve into multifaceted dimensions, including but not limited to: Multidimensional Trade-offs in Food-Water-Ecology Nexus, Effectiveness Assessment of Ecological Restoration Projects, Trade-offs and Synergies of Agricultural Development under SDGs, Scenario Analyses and Future Simulations, Methodological Advancements and Data Innovations.

Submission Deadline: 31 March 2025

<https://www.sciencedirect.com/journal/geography-and-sustainability/about/call-for-papers>

3.3 A new book written by Prof. Bojie Fu

This book named *The Spirit of Geography* systematically is about Prof. Bojie Fu's thoughts on geography research and teaching.



4. Important information

4.1 *The restructuring of IGU-GFE to IGU-GeoSus*

The request of restructuring IGU-GFE to IGU Commission on Geography and Sustainability (IGU-GEOSUS) has been approved by IGU from November, 2024. With the restructuring, the new commission would be more focused on areas related to geography and sustainability and more in line with the research, journal, and important activities of the commission. IGU-GEOSUS will continue to support the purpose of IGU to promote Geography through initiating and coordinating geographical research and teaching around the world, and provide a platform for communication among geographers globally with the aim of promoting research and innovation in relation to sustainability. IGU-GEOSUS will aim to serve as the focal point for developing, coordinating and implementing interdisciplinary research and education to promote sustainable development through an integrated geography perspective.